



Inglewood Road NW6

Parkheat  
*Sold on Service*





## Inglewood Road, NW6 £600,000 Share of Freehold

- Lovely 2 bedroom apartment
- 2nd floor of a sought after Mansion building
- Lift access
- Recently refurbished
- 14' master bedroom with fitted wardrobes
- 638 sq ft / 59.3 sq m
- Wooden floors throughout
- Open plan kitchen/living room
- Moments to amenities of West Hampstead high street
- EPC Rating: C, Council tax: Camden (band D)

Belsize Park/Hampstead  
208 Haverstock Hill  
NW3 2AG  
Sales 020 7431 1234  
Lettings 020 7431 3104  
[nw3@parkheath.com](mailto:nw3@parkheath.com)

South/West Hampstead  
192 West End Lane  
NW6 1SG  
Sales & Lettings  
Tel 020 7794 7111  
[192@parkheath.com](mailto:192@parkheath.com)

Kensal Rise  
54-56 Chamberlayne Rd  
NW10 3JH  
Tel 020 8960 4845  
[kensal@parkheath.com](mailto:kensal@parkheath.com)

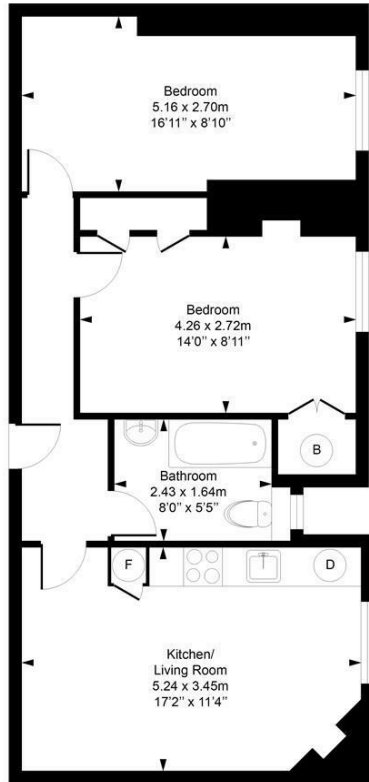
Property Management  
192 West End Lane  
NW6 1SG  
020 7433 6174  
[pm@parkheath.com](mailto:pm@parkheath.com)

**Parkheath**  
*Sold on Service*

**Camden Tax band D**

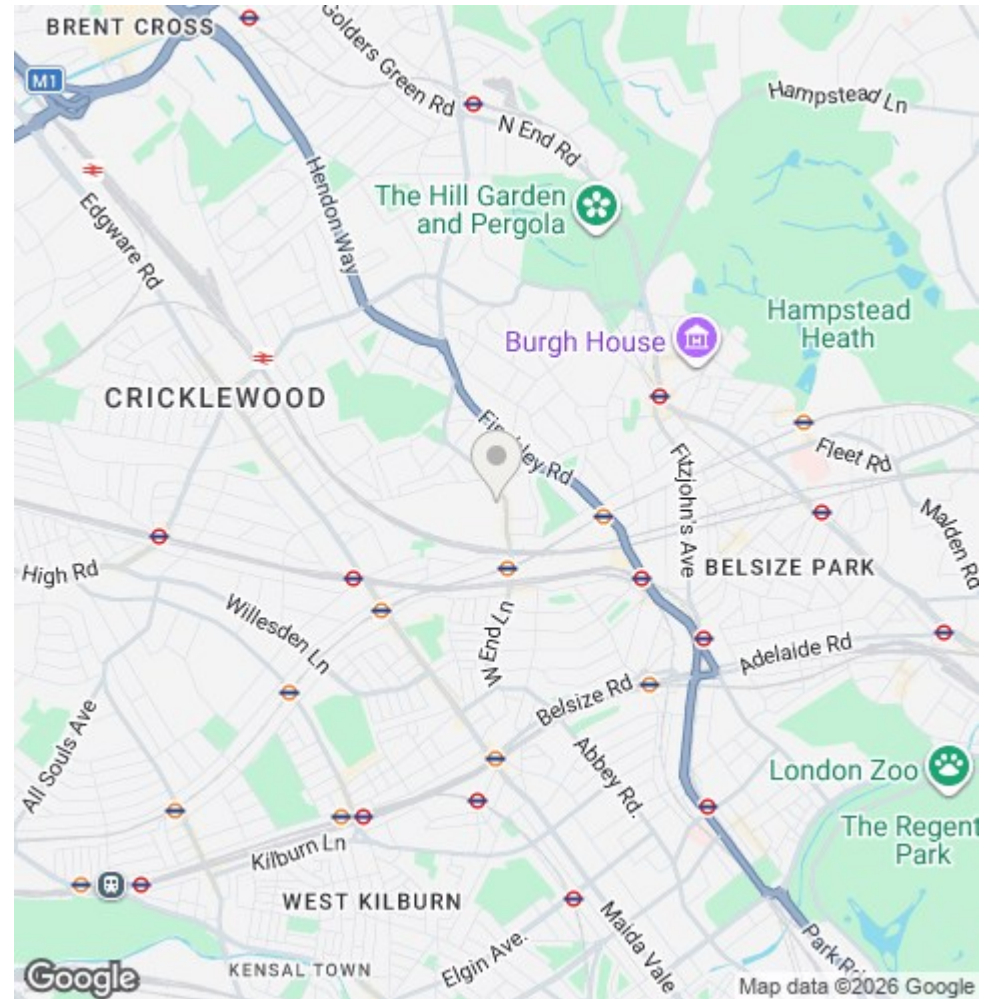
[www.parkheath.com](http://www.parkheath.com)

**Welbeck Mansions**  
 Approximate Gross Internal Area = 59.3 Sq m / 638 sq ft



**Second Floor**

Measured in accordance with RICS guidelines. Every attempt is made to ensure accuracy  
 However all measurements are approximate.  
 The floor plan is illustrative purposes only and is not to scale  
 ELLIE CLAIRE PHOTOGRAPHY LTD  
 www.ellieclairephotography.com



The particulars do not constitute part of an offer or contract. The particulars, including text, photographs and plans, are for the guidance only of prospective purchasers/tenants and must not be relied upon as statements of fact. The descriptions provided therein represent the opinion of the author and whilst given in good faith should not be construed as statements of fact. Nothing in these particulars shall be deemed a statement that the property is in good condition or otherwise or that any services or facilities are in good working order. All measurements are approximate